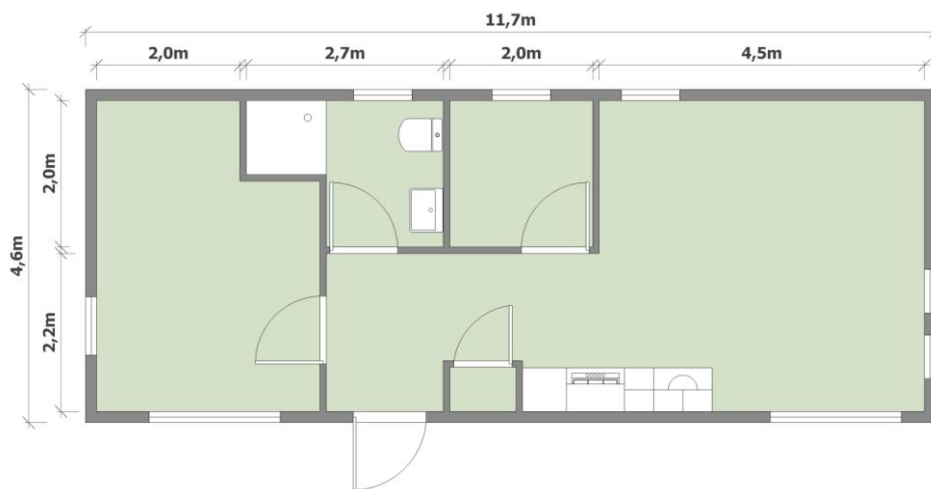


Butterfly home

Sometimes we build prototypes to show the many possibilities with prefab homes to customers. This steel frame insulated panel prototype is now for sale!

This prototype is a very special project: A frame based prefab home. A complete home of about 55 m² with 2 bedrooms, high quality design kitchen, comfortable bathroom and a spacious living room. In storage in Rotterdam. Only for sale in Netherlands and Belgium. Transport by truck only.

This is your chance to purchase a complete home that arrives “plug and play”. Ideal if already have land to put it on and want to avoid long design and construction times ... a home ready in 1 day!



Specifications:

Structure: Steel frame with SIP panels
Dimension: 12,7 x 4,6 x 3,6 m (LxWxH) external
Internal height: 2,4 to 3,4m (lowest point at the sides to highest point in the center)
Insulation: Walls and ceiling: Durable PVC cladding, 50mm XPC, moisture barrier, OSB, steel frame with 100mm mineral wool. Internal finish MGo board
Floor: Steel bottom-cover Mineral wool, cement fibre board, vinyl finish.

Window, door frames: Multi Chamber PVC frames, Gas filled high insulated double glass
Electrical system: Distribution box 6 groups, wall sockets, light fixtures and switches, electric ventilation in bathroom.
Kitchen: Fully functional high quality design kitchen. 2 m wide composite countertop with integrated gas stove, oven, sink, refrigerator.
Plumbing: All plumbing, sewerage and (drinking) water prepared, water filled radiators installed (no domestic boiler installed, connections for gas boiler prepared)
Bathroom: Waterproof sleek wall panels, mosaic (blue) tiled floor with shower with thermostatic faucet, sink and toilet

Location: Storage depot in Rotterdam

Transport: By truck only (we advice to transport the unit within the Netherlands and Belgium only, to avoid too high transport cost. Oversize road transport is fairly expensive.)

Price: €27.400,- ex VAT ex Depot

